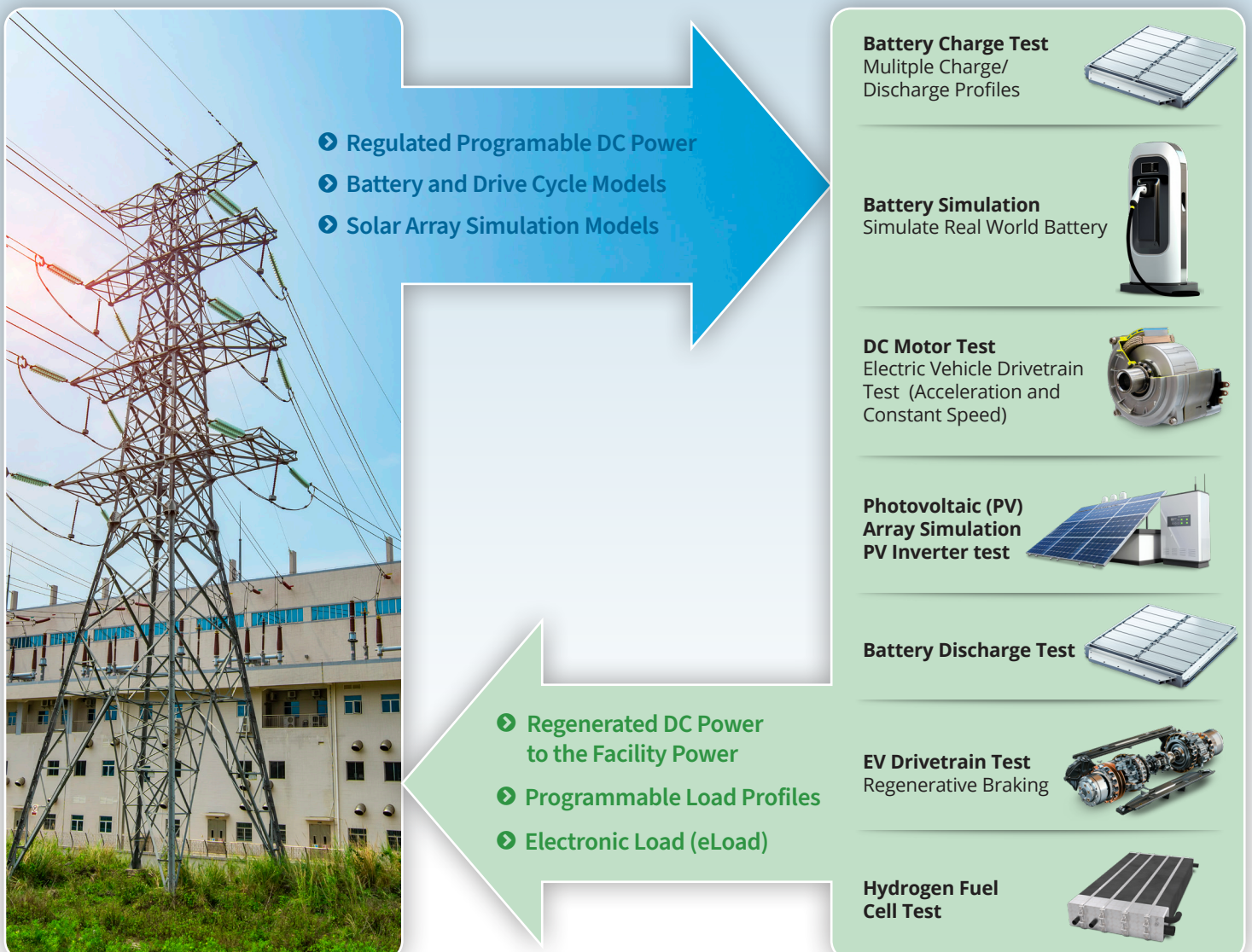
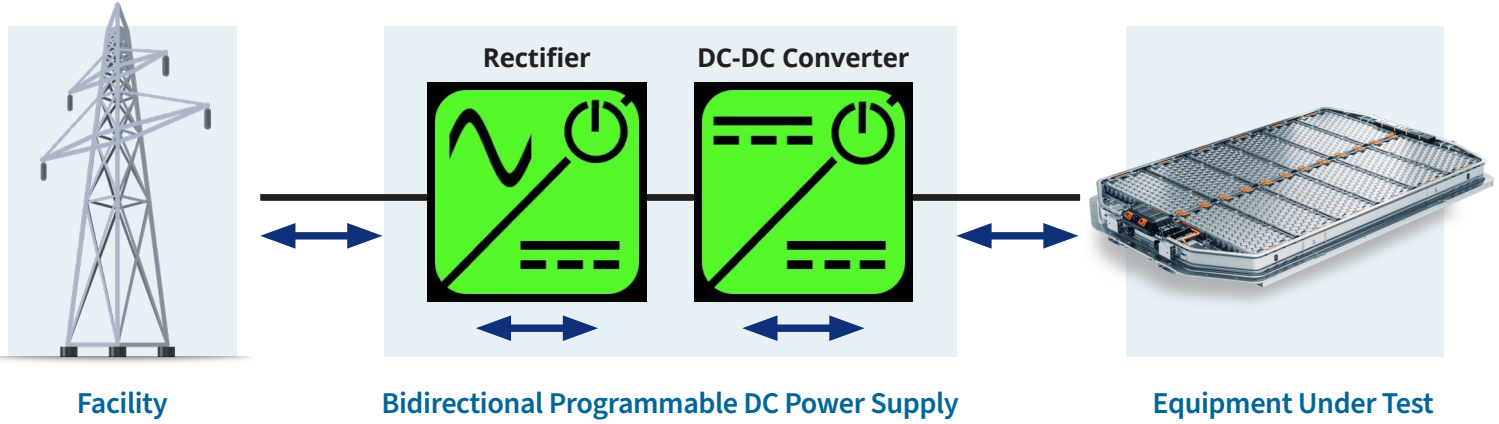


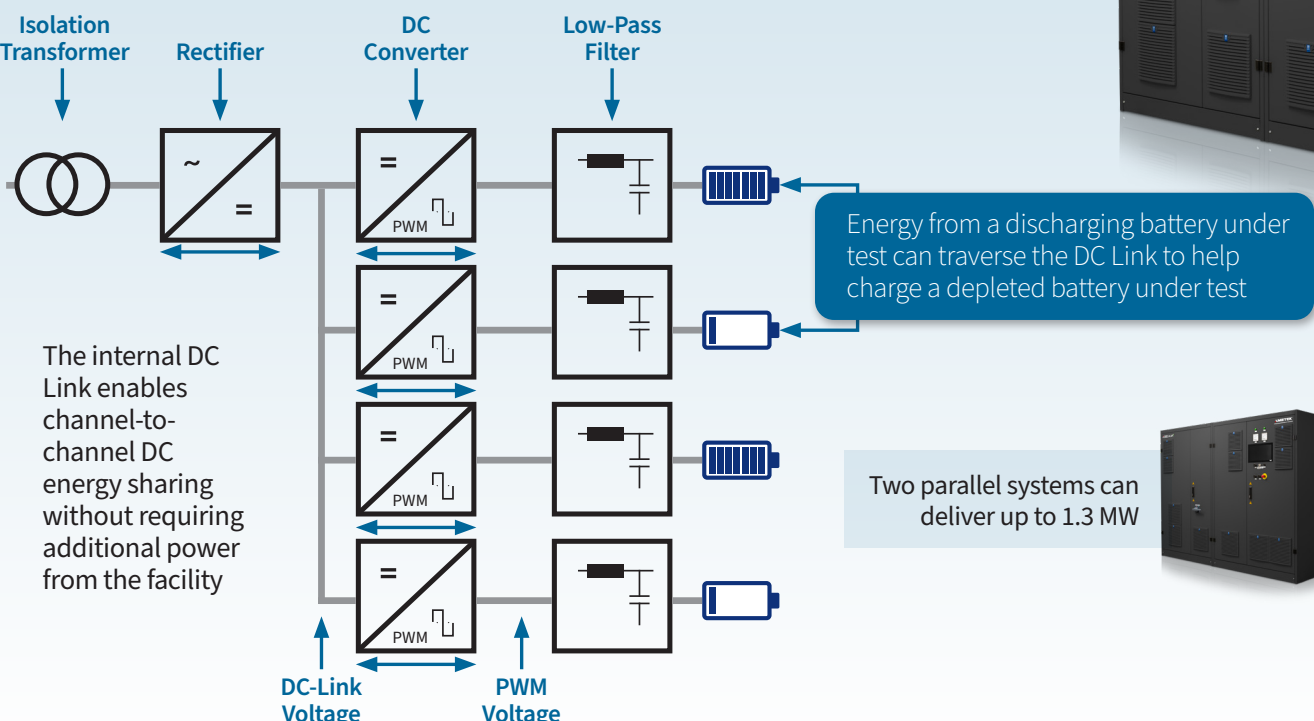
Bidirectional Programmable DC Power Supplies

A bidirectional programmable DC power supply works between the facility power and your equipment under test, efficiently providing precise voltage and current levels while regenerating excess power back to the facility. Bidirectional programmable DC power supplies can test equipment ranging from multi-chemistry electric-vehicle batteries to common DC bus testing for various automotive and aerospace drivetrain applications.



i-BEAM

The Sorensen **i**ntelligent-**B**idirectional **E**nergy **A**Mplified (i-BEAM) Series delivers 650kW at up to 1,500 V or 1,000 A in a floor-standing cabinet.



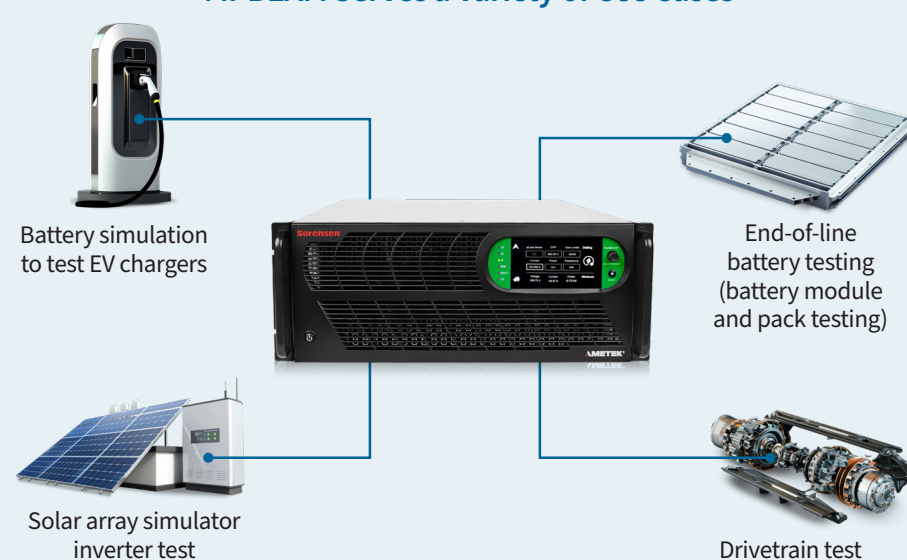
Two parallel systems can deliver up to 1.3 MW



Mi-BEAM

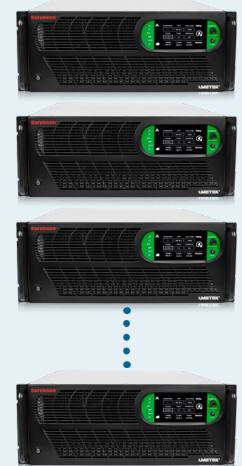
The Sorensen **M**odular **i**ntelligent-**B**idirectional **E**nergy **A**Mplified (Mi-BEAM) Series delivers up to 37 kW at up to 2,000 V in a single 4U, 19-inch rackmount chassis.

Mi-BEAM Serves a Variety of Use Cases



Mi-BEAM is fully scalable

Modules can be paralleled for ratings up to 1.2 MW



Sorensen i-BEAM and Mi-BEAM

Precise, reliable bidirectional programmable DC power for all your automotive, industrial, power and energy applications.

Contact AMETEK Programmable Power for more information.

programmablepower.com

