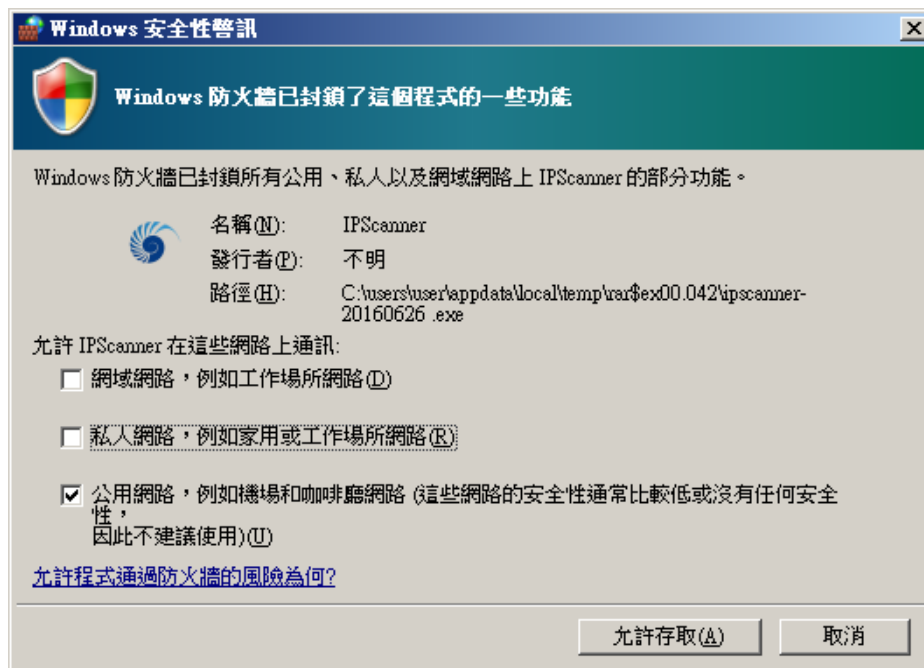
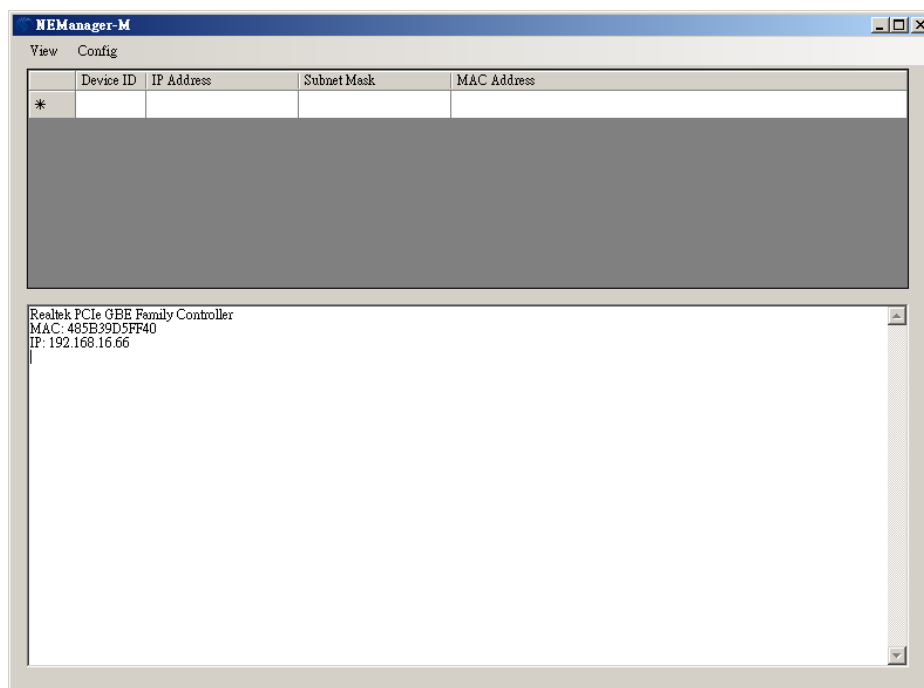


LAN Setup

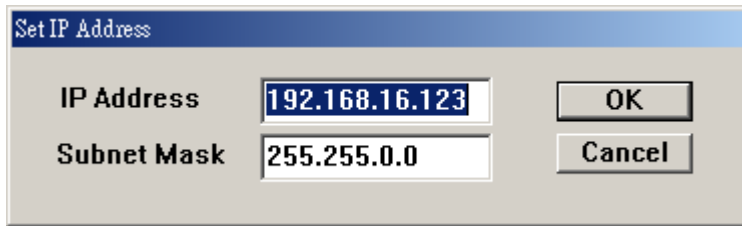
1. Connecting AC power and the network line to the 3300F mainframe, connect the other side of the network line to the HUB.
2. Run the IPScanner.EXE which bellows the path of the LAN on the CDROM drive A
Windows security warning will appear first. Please select the public network and click [Allow access].



The following screen will appear If the device does not appear, please press F5
refresh, or check whether the first step is completed normally.



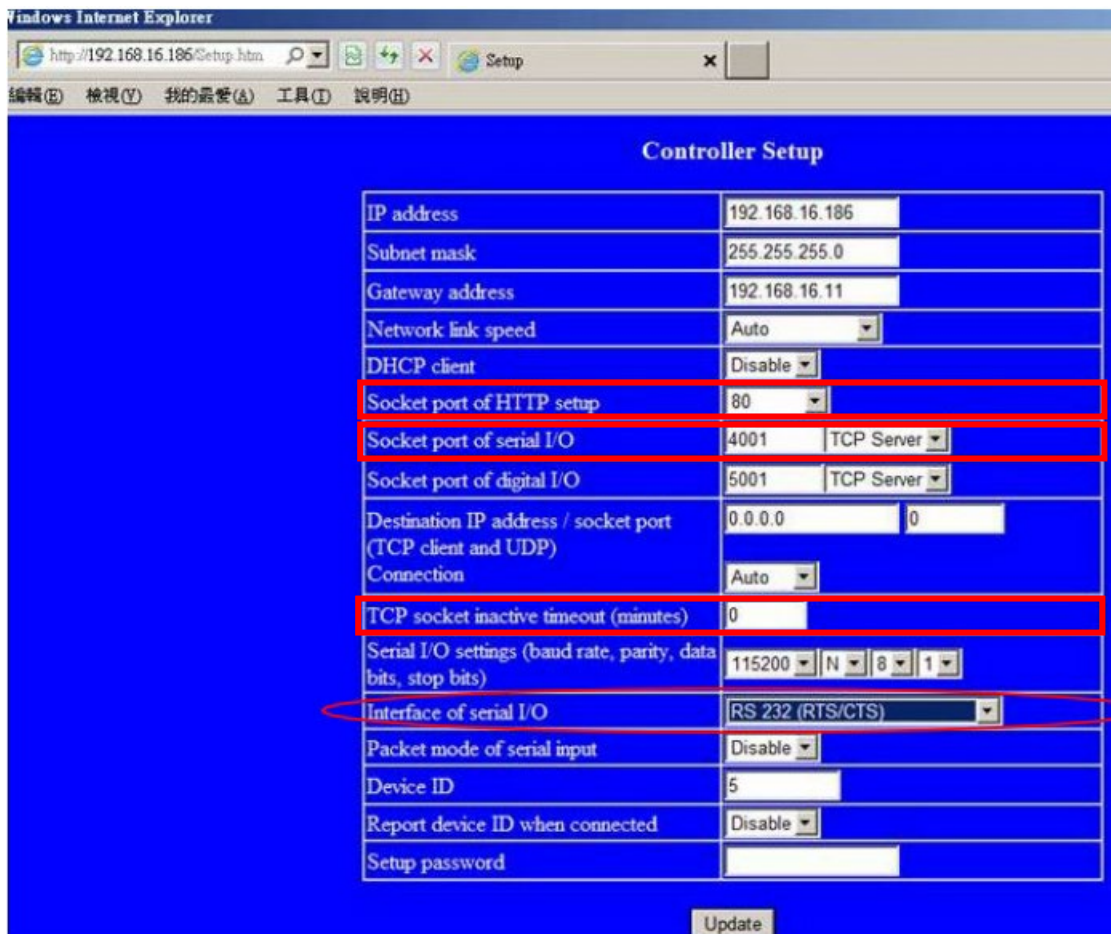
3. It will be shown the installation which has been searched on the screen , click it and select the Set IP Address bellows Config :



A dialog box titled "Set IP Address" with two input fields and two buttons. The "IP Address" field contains "192.168.16.123" and the "Subnet Mask" field contains "255.255.0.0". The buttons are "OK" and "Cancel".

IP Address	192.168.16.123	OK
Subnet Mask	255.255.0.0	Cancel

4. Set an useful IP Address and Subnet Mask.
5. It will be shown the Setup Device as the following figure if all steps was corrected to be run.



A screenshot of a web browser window showing a "Controller Setup" form. The form has a blue background and contains various configuration fields. Several fields are highlighted with red rectangles: "Socket port of HTTP setup", "Socket port of serial I/O", "Socket port of digital I/O", "TCP socket inactive timeout (minutes)", and "Interface of serial I/O". The "Interface of serial I/O" field is also circled in red. The "Update" button is at the bottom right.

Controller Setup	
IP address	192.168.16.186
Subnet mask	255.255.255.0
Gateway address	192.168.16.11
Network link speed	Auto
DHCP client	Disable
Socket port of HTTP setup	80
Socket port of serial I/O	4001 TCP Server
Socket port of digital I/O	5001 TCP Server
Destination IP address / socket port (TCP client and UDP)	0.0.0.0 0
Connection	Auto
TCP socket inactive timeout (minutes)	0
Serial I/O settings (baud rate, parity, data bits, stop bits)	115200 N 8 1
Interface of serial I/O	RS 232 (RTS/CTS)
Packet mode of serial input	Disable
Device ID	5
Report device ID when connected	Disable
Setup password	

Update

6. Insert the numbers as the following :
- IP Address
 - Subnet Mask
 - Gateway Address
 - Network link speed : AUTO
 - DHCP client : The DHCP is set Disable

- vi. Socket port of HTTP setup : It is set to be 80 , don't need to change
- vii. Socket port of serial I/O : Set it to be 4001
- viii. Socket port of digital I/O : Set it to be 5001
- ix. Destination IP address / socket port (TCP client and UDP) Connection :
Don't need to change
- x. Serial I/O settings (baud rate, parity, data, bits, stop bits) :Insert 115200, N, 8, 1
- xi. Interface of serial I/O : Set RS-232(RTS/CTS)
- xii. Packet mode of serial input : It is set to be Disable
- xiii. Device ID : It is set to be 5
- xiv. Setup password : Not required.
- xv. Access password : Not required.

Note: Do not set the HTTP port to 81. Setting it to 81 will cause the interface card to be locked. If the interface card is locked, it must be sent back to be unlocked.